



# HOW TO VOTE IN GEORGIA

## A Quick Guide for People with Disabilities Voting in the 2022 General Election on or Before November 8, 2022

### What is Voting? Why Do We Vote?

Voting is a way to make choices. People use voting to make all kinds of choices.

Voting gets used for small choices. For example, friends can vote to decide what flavor of ice cream to buy.

Voting can also be used for bigger choices. For example, we can vote to decide who runs the government.



In this guide, we will talk about voting on bigger choices.

Voting is one of our most important rights. Laws affect our lives. Voting lets us have a say in what laws are made.



This is important for people with disabilities! Voting is a way to speak up for ourselves. Voting is a way to fight for laws we believe in. Voting lets us have a say about who is in charge of the government.

What programs will be funded. Like support services.

We can pick people who we agree with. Then, they will help pass laws that we agree with. It matters who you think should be in charge.



It matters what you think about laws. Voting is just as important for people with disabilities as it is for everyone else.

## Registering to Vote

Before you can vote in an election in Georgia, you need to register to vote.

When you register to vote, you tell the government you want to be able to vote in the next election.



### Can I register to vote?

To register to vote, you must:

- Be a citizen of the United States
- Live in Georgia
- Live in the county you register to vote in
- You can register at age 17½ as long as you are 18 by the day you vote

If you have any questions about registering to vote, contact your county election board.

### When you register to vote, you will need:

- An address in the state of Georgia and
- A Georgia driver's license or a Georgia state identification card also called ID or
- If you do not have an ID, you can use the last 4 numbers of your Social Security Number also called SSN
- If you do not have an ID or SSN, contact your county election board

# Who Cannot Vote in Georgia?

## What if I have a felony?

You cannot vote if you are currently serving a sentence for a felony.



You can register to vote when you have completed your:

- prison time
- parole
- probation

If you are in jail because of a pending case or are serving a sentence for a misdemeanor conviction, you can still vote.

Your felony sentence is considered completed even if they have outstanding fines, such as unpaid restitution, fees, costs, or surcharges.

## Can I vote if I have gone to jail or prison?

If you have gone to jail or prison, you may be able to vote. It depends on what kind of crime you went to jail or prison for.

You can check if you are able to vote at the U.S. Vote Foundation's [page about Georgia laws](#) and the Georgia Justice Project's [page about voting](#).

If you are not sure whether you can vote, talk to your local Protection and Advocacy Agency also called P&A.

The P&A in Georgia is the Georgia Advocacy Office also called GAO. You can [contact the Georgia Advocacy Office](#). They can help you learn if you can vote.



### **Can I register to vote if I have a disability?**

**Yes.** You can register to vote if you have a disability.

Your vote matters as much as anyone else's.

Your vote is protected by laws. These laws make sure that:

- If you are registered, you can vote
- You can vote on your own
- You can get help voting
- Your vote is private from others



### **Can I register to vote if I have a guardian?**

**Yes.** You can still vote if you have a guardian in Georgia.

- You cannot register if you have been ordered by a judge that you cannot vote.

- You can still register and vote if you are under guardianship. Your vote is only taken away if a judge takes it away. Check your guardianship paperwork to see if it is in writing that you cannot vote.
- The GAO can help you get back your right to vote, if a judge took it away.



If you are not sure whether you can vote, talk to GAO.



The GAO helps people with disabilities who have legal problems. For example, people are told that they are not allowed to vote.

### **How do I register to vote?**

You can register to vote in 3 ways:

- You can register to vote online. Go to Georgia's [Online Voter Registration Website](#). The website will ask you questions. It will help you complete your voter registration.
- You can download a copy of the Georgia [mail-in registration form](#). Then, you can fill out the form. You can fill out the form on your computer.

- Or, you can print it out and fill it out by hand. You can get help filling out the form if you need it. If someone helps you fill out the form, they must also sign their name on the form where it asks.

Only register to vote in one of these ways. Do not register to vote more than one time. You can get in trouble if you try to register to vote more than one time.

If you do not have a computer or access to the Internet, there are places you can get help to register to vote.



These include:

- A Department of Driver Services or DDS office. You can find your closest DDS office at the [DDS website](#).
- Your county's elections board office. You can find your county's election office on the [Georgia county election board office website](#).
- Your local library
- Your local community centers
- Your local Center for Independent Living also called CIL

All voters should check to see if their registration is up-to-date. You can check if you are registered to vote at [vote.org](#). The website will ask you questions.

It will tell you if you are still registered to vote.

## **When do I need to be registered to vote for the November 8, 2022 election in Georgia?**

You must be registered to vote before October 10, 2022.

You will not be able to vote if you register after October 10, 2022.



- You cannot register to vote on election day.

### **Can I get help registering to vote?**

**Yes.** If you need help registering to vote, you can get help. You can ask anyone you trust to help you register to vote.

You can get help from:

- A family member
- A friend
- A support worker
- Someone who works for a group that helps people register to vote

If you get help to register to vote, the person must also sign their name on your voter registration form.



# Who Am I Voting For? What Am I Voting On?

When you vote, you get a ballot.

A ballot is a list of the people and issues you can vote for.

Ballots usually have candidates.

- Candidates are people running for office who you can vote for.



Ballots Measures are questions you are asked on the ballot. Measures are questions that can be about changes your local or state government wants to make.

Georgia's **How-To Vote Guide** is available on your smartphone. You can also download the [android app](#) onto your smartphone.

Research more on candidates and issues and use GoVoter and ASAN information from the resource links at the end of this guide.

Voting is how we choose our elected officials. An elected official is someone who you pick to work at a job in the government. An elected official's job is to work for the people.

Here are some examples of elected officials you might vote for:

<b>Federal Elections for the whole country</b>	
<b>The President of the United States.</b> They make decisions for the whole country.	<b>A member of Congress.</b> Congress is the part of the U.S. government that makes laws. It has 2 parts: the Senate and the House of Representatives.

<b>State Elections will decide how the state will work together</b>	
<b>A State Senator and Representative.</b> They make laws only for their state.	<b>A State Governor.</b> They make decisions only for their state.

<b>Local Elections in your neighborhood or community</b>	
<b>A Mayor.</b> They make decisions for their city.	<b>A city council member.</b> They make laws for their city.

People vote to choose their elected officials. The voters choose someone with the same ideas.

- The elected official works to make those ideas into laws.
- The elected official has to work to make laws that people want.
- The elected official wants people to keep voting for them.

When someone wants to be an elected official, they run for office.

Someone who is running for office is called a candidate.



Your ballot might also have ballot measures. A ballot measure is a question that you can vote on.



Ballot measures are used to let voters directly vote on laws.

Voters get to decide if they agree or disagree with the ballot measure.

If you agree with the ballot measure, vote **yes**.

If you do not agree with the ballot measure, vote **no**.

There are 4 statewide ballot measures in Georgia this year. Statewide means everyone in the state gets to vote on them.

You can learn more about the four ballot measures at [Ballotpedia](#).

## Can I look at my ballot before I go to vote?

**Yes.** You can look at a sample ballot. A sample ballot does not count as a real ballot.



- The sample ballot does have all the candidates and ballot measures that your real ballot will have.
- You can use a sample ballot to practice who you are going to vote for.
- You can mark your sample ballot before you go to vote.
- You can take your sample ballot with you when you go to vote.
- You can look at the sample ballot while you vote on your real ballot. This will make it easier for you to remember who you are voting for.

You can get a sample ballot through Ballotpedia's [Sample Ballot Lookup](#).

- Enter your street address, city, and state in the boxes.
- Then, click "View My Ballot."
- The website will give you a sample ballot to look at.
- You can print this sample ballot out.

You can mark this sample ballot however you want.

## Voting In-Person

### What happens when I vote in-person?

Many people vote in-person. Voting in-person is where you go to a place to vote.

### Where do I go to vote in-person?

On Election Day, you will go to your polling place to vote in-person. A polling place is a place where people go to vote in-person.

Your polling place depends on where you live.

You can find your polling place at Georgia's [My Voter Page](#) website.

### What do I bring to vote?

You will need to bring identification or ID to vote.

Here are some examples of types of identification you can show to vote:

- Georgia driver's license
- Georgia state-issued ID card
- Student ID from a Georgia public college or university
- U.S. passport



There are other types of ID you can use to vote.

You can find out more about what types of ID you can use to vote at the [Georgia Secretary of State's website](#).

For example:

Aliyah is going to vote in Georgia.

Aliyah must bring her ID to vote.

Aliyah has a Georgia driver's license.

Aliyah brings her driver's license to vote

You can also bring a sample ballot or any notes you have to help you vote.

### **Can I bring someone to help me vote?**

**Yes.** If you want help voting, you can bring someone to help you vote.

But the person helping you vote CANNOT be:

- A candidate in the election
- A family member of a candidate in the election
- Your boss at your work
- A representative of your labor union at your work.
  - A labor union is a group of workers who join together to protect their rights at work.

For example:

Hanna is voting in Georgia.

Hanna needs help voting.

Hanna brings her brother, Roger, with her.

Roger helps Hanna vote.

## Can I Vote Outside If the Polling Place Is Not Accessible To Me?

**No.** Georgia does not allow voters to vote outside if the polling place is not accessible.



## Can I vote before Election Day?

**Yes.** Georgia allows any voter to vote in-person before Election Day during the early voting period

Early voting is when you vote in-person before Election Day. In Georgia is also called Advanced in-Person voting.

Advanced in-person voting begins October 17, 2022.

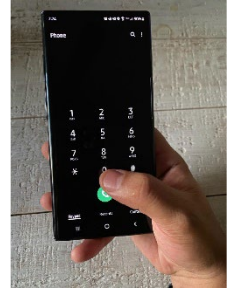
In Georgia, some counties are open on the weekend for Early voting.

You can vote Monday to Friday, starting Monday, October 17, 2022 to Monday, November 7, 2022.

- Saturday, October 22 and Sunday, October 23, 2022.
- Saturday, October 29 and Sunday, October 30, 2022.



Call your [county election board](#) to see if your polling place offers these dates and hours open.



# What Happens When I Vote By Mail?

You can vote by mail in Georgia. Voting by mail is when you have your ballot mailed to you.

In Georgia, voting by mail is called **absentee voting**. The county election board will mail you an absentee ballot. You fill out your ballot.

Once you fill out your ballot, you can mail your completed ballot back. Or, you can drop your completed ballot off at a ballot drop box.

A drop box is a box that the county election board has placed in a location for voters to drop off their registration form and ballots.



Anyone can vote by mail in Georgia. You do not need an excuse to vote by mail.

Some reasons why you might want to vote by mail are:

- You cannot leave your home because of a disability
- You do not have time to go to your polling place to vote during early voting or on Election Day
- You are worried about catching COVID-19 if you go to the polling place to vote
- You can vote at home or in another place of your choice

## How do I get an absentee ballot?

If you want to vote by mail, you must request an absentee ballot.

An absentee ballot is a ballot that is mailed to you. Before you request an absentee ballot, you must be registered to vote in Georgia.

You can ask for an absentee ballot in several ways:

- You can call the county election board
- You can fill out the [Absentee Ballot Request form](#) online.
- You can download and fill out the [Application for Georgia Official Absentee Ballot](#). Then you can return this Application to your [County Board of Registrars](#) by:
  - Mail
  - Email
  - Fax
  - Dropping it off in-person at the county election board

You must send in a **copy** of your identification or ID when you request an absentee ballot

This identification could be:

- Copy of your Georgia driver's license
- Copy of your Georgia state-issued ID card
- Copy of your U.S. passport



You can also use any of the following documents that show your name and address:

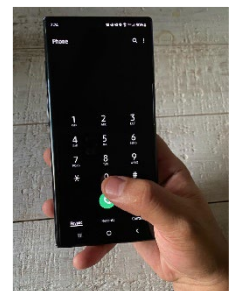
- Copy of a current month utility bill
- Copy of a Bank statement
- Copy of a Paycheck stub
- Copy of a Government check
- Copy of other government documents

You can learn more about other kinds of IDs you can use to request an absentee ballot at the [Georgia Department of Driver Services website](#). If you are not sure, call your county election board.

Only send in a copy or picture of your identification. Do not send in your real identification documents. Keep your original document. Send in a **copy**.

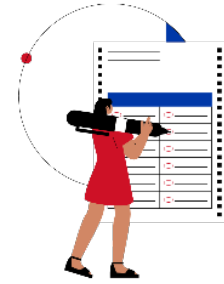
You must request your absentee ballot by October 28, 2022 for the November 8, 2022 election.

Call to ask for your ballot as soon as possible. This will make sure that you receive your ballot on time.



## **What If I Need Help Filling Out the Absentee Ballot Application?**

You can get help filling out the absentee ballot application. You can ask anyone you trust to help you fill out the absentee ballot application.



The person that helps you must sign a statement called an oath on the application. The oath says that you got help filling out the application because you have a disability.

## **Can I request an electronic absentee ballot?**

**No.** Georgia does not allow electronic absentee ballots. You can only request a paper absentee ballot.

## **How do I fill out my absentee ballot and the envelopes it came with?**

First, you vote by filling out the ballot.

- Follow the instructions on the ballot to vote.

Then, fill out the envelopes that the ballot came with.

- Sign your name on the envelopes where they ask you to sign.
- You must also write your driver's license or state ID number on the envelope where it asks you to.
- If you do not have a driver's license or state ID card, you must write the last 4 numbers of your Social Security Number.

For example:

Carter is voting with an absentee ballot.

- Carter fills out the ballot.
- Carter puts the ballot in the return envelope it came with.
- Carter signs the envelope where it asked.
- Carter puts a stamp on the envelope and mails it back.

### **What if I want help filling out my ballot?**

You are allowed to choose someone to help you mark your ballot.

The person who helps you mark your ballot must sign an oath on the ballot envelope.

The oath that says that you need help with voting because you have a disability.

For example:

Harley is voting by absentee ballot.

- Harley needs help voting.
- Harley asks their mother to help them vote.
- Harley's mother helps Harley vote.
- Harley's mother also signs the ballot envelope.
- Harley's mother signs an oath saying she helped Harley vote.

## **How Do I Return My Ballot?**

You must return your ballot before the polls close on election day. Election day is Tuesday, November 8, 2022.



### **You can return your ballot in any of these ways:**

- By mailing it back. Don't forget a stamp!
- If you mail your ballot, it must arrive at the county election board office before or on Election Day
- By bringing it back to the county election board office in your county
- By dropping it at a polling location
- By dropping it in a drop box in your county
  - All counties have at least one drop box for ballots
  - Check with your county election board for the location of the drop boxes

### **Can someone else return my ballot for me?**

**Yes.** You can have one of the following people return your ballot for you:

- A support worker or caregiver
- Someone from your household
- A family member

## Do I need to show identification or ID to vote by mail?

Most people will not need to show an ID to vote by mail.



There are only 2 cases where you will need to provide identification to vote by mail:

- First time voters in a U.S. government election in Georgia will need to send an ID.
  - Send a copy of your ID with your ballot.
- Your absentee ballot will come with instructions on what ID to send. Send a copy of your ID with your ballot.

## Can I track my ballot once I mail it?

**Yes.** You can track your ballot online to see if the county election board office has received it.

- You can do this on the Georgia election website: [Track your ballot.](#)



## **What Do I Do If I Need More Help or Information About Voting?**

Go to the Georgia [state election website](#) for more information. Learn about [voting help for voters with disabilities](#).

You can also contact the Georgia Advocacy Office, also called the GAO. The GAO also has an email address: [info@thegao.org](mailto:info@thegao.org).

The GAO can help you register to vote.

The GAO can help you if you have problems voting.

The GAO has two phone numbers. You can call anytime to report any voting problems:

- (800) 537-2329
- (404) 885-1234 (Voice or TTY).

You can also check out these resources:

[Georgia Secretary of State: Georgia Voter Guide](#)

[Guardianship and Voting Laws](#)

[Resources for Deaf and Hard of Hearing Voters](#)

[Resources for Blind and Low Vision Voters](#)

[Easy Read and Plain Language Voting Resources](#)

[ASL Hotline](#): 301-818-VOTE or 301-818-8683

[Election Protection Hotline](#): 866-OUR-VOTE

or 866-687-8683

SABE [GoVoter](#)



The 2022 State Voting Guides for Disabled Voters are made by the REV UP Voting Campaign at the American Association of People with Disabilities. This project was led by Sarah Blahovec and the support of Liz Weintraub at the Association of University Centers on Disabilities and REV UP organizers. SABE's GoVoter Project and SARTAC Advisory Board members created the Easy Read version.